

PRM

PREMIER ELECTRICAL

Owner's Manual

Axial Blow-Dryer Series



Read the owner's manual thoroughly before use
Save the Owner's Manual

Index

1.0 Specifications	Page 2
2.0 Important safety instructions	Page 3
3.0 Operating instructions	Page 4
4.0 Functions of Operating panel	
4.1 Hour Meter	Page 4
4.2 Socket and Earth leakage protector	Page 4
4.3 Three-way Switch	Page 4
4.4 12A Overload Protector	Page 5
5.0 Parallel Operations	Page 5
6.0 Drying Range	Page 5
7.0 Maintenance	Page 6
8.0 Parts List	Page 6,7
9.0 Wiring Diagram	Page 7

1.0 Specifications

Models Parameter	CGZL-1/230	CGZL-1/120	CGZL-2/230	CGZL-2/120
Rated Voltage	230 V	120 V	230 V	120 V
Current,Frequency	1.25 A, 50/60 Hz	2.5 A, 50/60 Hz	1.25 A, 50/60 Hz	2.5 A, 50/60 Hz
Rated Power	1/4 HP		1/4 HP	
Weight	16.4 kg	36 lb	15 kg	33 lb
Power cord Length	7.5 m	24.6 ft	7.5 m	24.6 ft
Air Output(Low speed)	4600 m3/h	2700 CFM	4600 m3/h	2700 CFM
Air Output(High speed)	5100 m3/h	3000 CFM	5100 m3/h	3000 CFM
Hour Meter / Draw Bar	Yes/Yes		No/No	
SIZE/Width*Height*Depth	640*620*290mm	25.2*24.4*11.4in	640*620*290mm	25.2*24.4*11.4in



Fig. 1



Fig. 2

2.0 Important Safety Instructions

WARNING

- This equipment is not designed to use combustible/volatile substance such as gasoline or kerosene, in, on, or near the machine. The use of such materials will cause an extreme hazardous condition.
- Do not operate the machine with a cut or frayed power cord. Replace cord if it becomes damaged.
- Do not unplug the machine by pulling on the cord. Grasp the plug firmly and pull it out of the wall socket or power receptacle.
- Always use a grounded outlet.
- Never operate electrical equipment in standing water.
- Never operate with the safety grills removed. Personal injury may result.
- Do not stick your fingers or other objects through the safety grills.
- Do not restrict airflow to the machine. This may cause the machine to overheat.
- Machine should never be serviced or cleaned while it is plugged in.
- Do not plug more than 9.0 amps total into the outlet.
- Do not sit or stand on the machine or use as a shelf or table.
- Check GFCI protection before each use by pushing “test” button. If operating properly, “reset” button will pop out
- Before leaving an Axial Blow-dryer unattended, ensure children do not have access to the equipment. Do not allow children to play with or near the machine or in its air flow.
- To reduce the risk of fire or electric shock, do not use this Blow-dryer with any solid-state speed control device.
- Operate the equipment in temperature - 18°C to 48°C

FAILURE TO COMPLY WITH THE ABOVE WARNING INSTRUCTIONS WILL VOID WARRANTY

GROUNDING INSTRUCTIONS

The model has been outfitted with the appropriate grounded connectors. Make sure the machine is connected to grounded outlet having the same configuration as the grounded plug. No adapter should be used with this machine. Any modification to the connectors will void the warranty.

3.0 Operating Instructions

CGZL series are running 2 models, CGZL-1 and CGZL-2. CGZL-1 is equipped with draw bar and wheels for easy transportation and an hour meter for calculating operating time. CGZL-2 is not equipped with the draw bar, wheels and hour meter. In transportation for CGZL-2 please use the handle on top of the blow-dryer.

Place the machine on the ground. Before use, please check whether the power cord and plug are broken. If no breakage is found, connect the plug to the standard earthing socket. The voltage and current of the socket is greater than the rated voltage and current of the machine. Then, check the earth leakage protector on the safety plug socket to ensure it is not tripped. Turn on the power switch and choose the drying mode through the Three-way Switch on the operating panel (Fig. 3, 1.3). The operator must make sure the blow-dryer is operating normally after starting up before leaving.

4.0 Functions of Operating Panel

4.1 Hour Meter (Fig. 3, 1.1)

The function of the hour meter is to record operating time of the blow-dryer. It offers convenience to evaluate the time and the charges of different new areas by calculating the time to dry a similar area. Moreover it offers time record of all historical operating of the blow-dryer.

4.2 Socket and Earth leakage protector (Fig. 3,1.2)

CGZL series blow-dryers are equipped with sockets, through which the blow-dryers can be connected one to another. The socket is equipped with an earth leakage protector which improves the security of the operator operating the blow-dryer under a damp environment. The protector will break the power automatically in case of the electric leakage in the machine is detected. It is strongly recommended to check the protector working normally before operating the blow-dryer. To check the protector please follow the steps, First to press the “Reset” button after the blow-dryer plug in, A small LED on the protector flashes as an indication. Second to press the “Test” button. It indicates the protector works normally if the “Test” button pops out. If it is found the blow-dryer does not work please check whether “Reset” button can pop out or not. If yes, please press down the “Reset” button. If the “Reset” button pops out again please contact authorized service center or your local dealer.

4.3 Three-way Switch (Fig. 3 ,1.3)

A three-way switch is used for CGZL series blow-dryer. The switch is with 2 gears of speed regulating and respond to different air output demands. Sign “—” indicates low speed. Sign “二” indicates high speed. And “O” in middle indicates disconnect state.

4.4 12A Overload Protector (Fig 3,1.4)

CGZL series blow-dryers are equipped with 12A overload protectors. It will automatically cut off the circuit once current is over 12A due to circuit fault. Press “Reset” button when the circuit fault is eliminated. Please contact authorized service center or your local dealer if the “Reset” button pops out again.

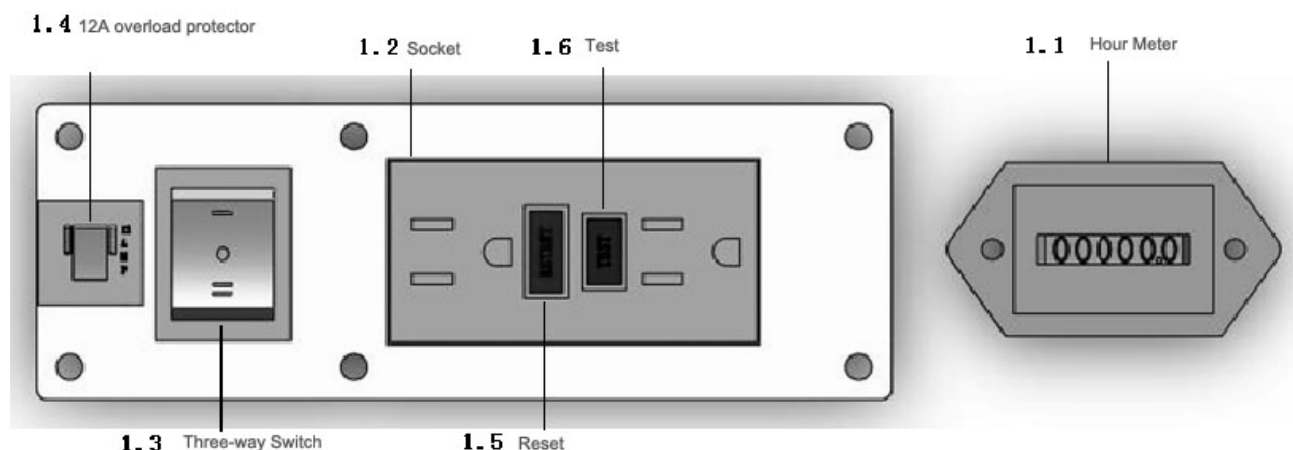


Fig. 3

5.0 Parallel Operations

As the rated current of the axial blow-dryer is 2.5A, the similar blow-dryers can be connected through the power socket (Fig. 3, 1.2) on the operating panel. The overload protector with current of 12A on the operating panel allows 4 axial blow-dryers to use in parallel at the same time (Figure 4).

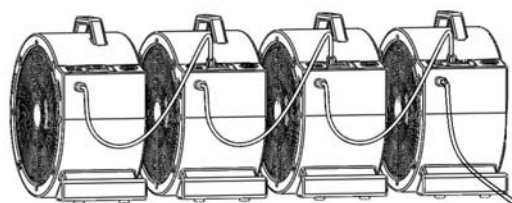


Fig. 4

6.0 Drying Range

The current industry standard requires a blow drier guarantee the straight drying length of 5 meters; some industry standards of commercial constructions specify that a blow drier should guarantee 5~6 square meters.

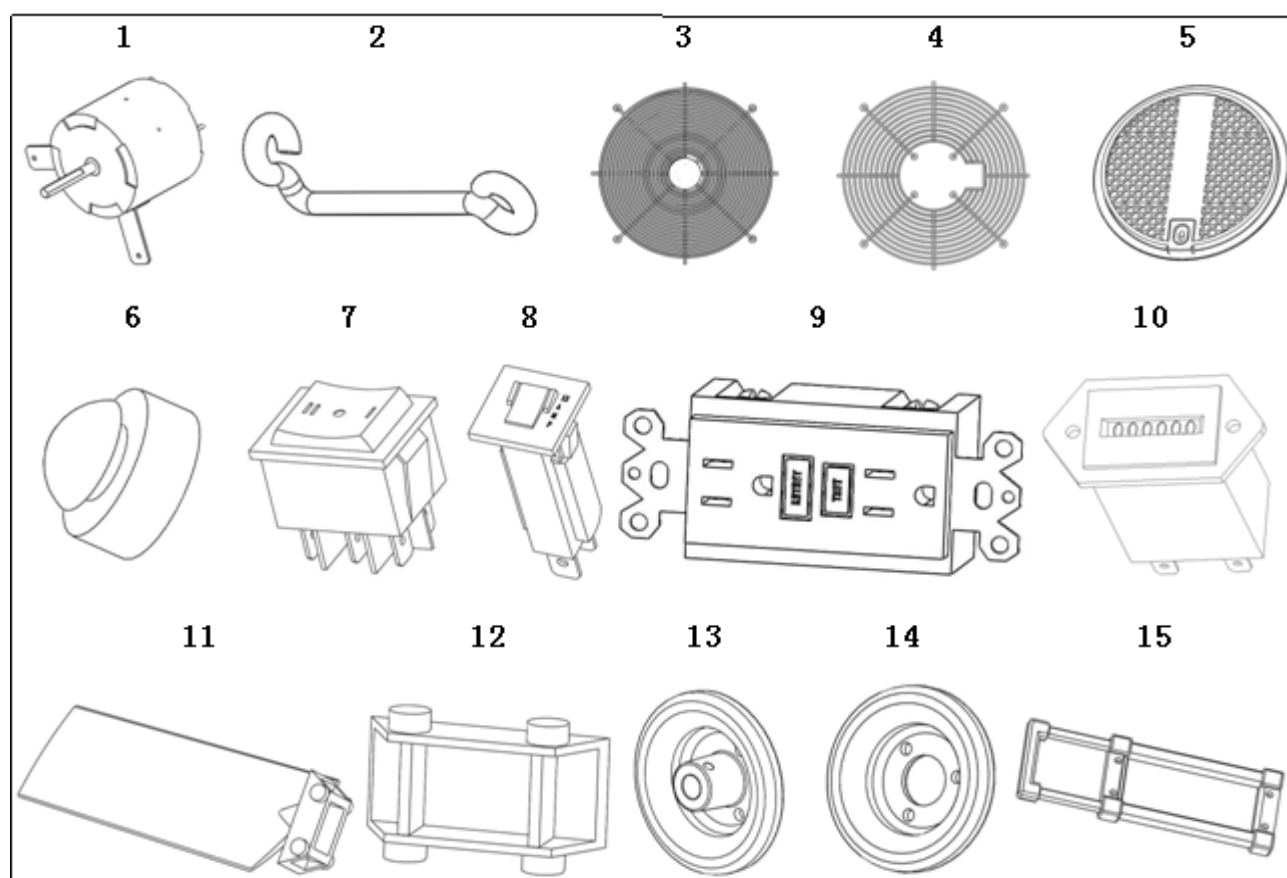
The time to dry off a standard size area is far less than other drying equipment by using CGZL series blow-dryer. Especially for large-area building the CGZL series can dry off more

area in method of 5.0 Parallel Operation. Meantime it offers convenience to dry off the area far from the fixed power supply.

7.0 Maintenance

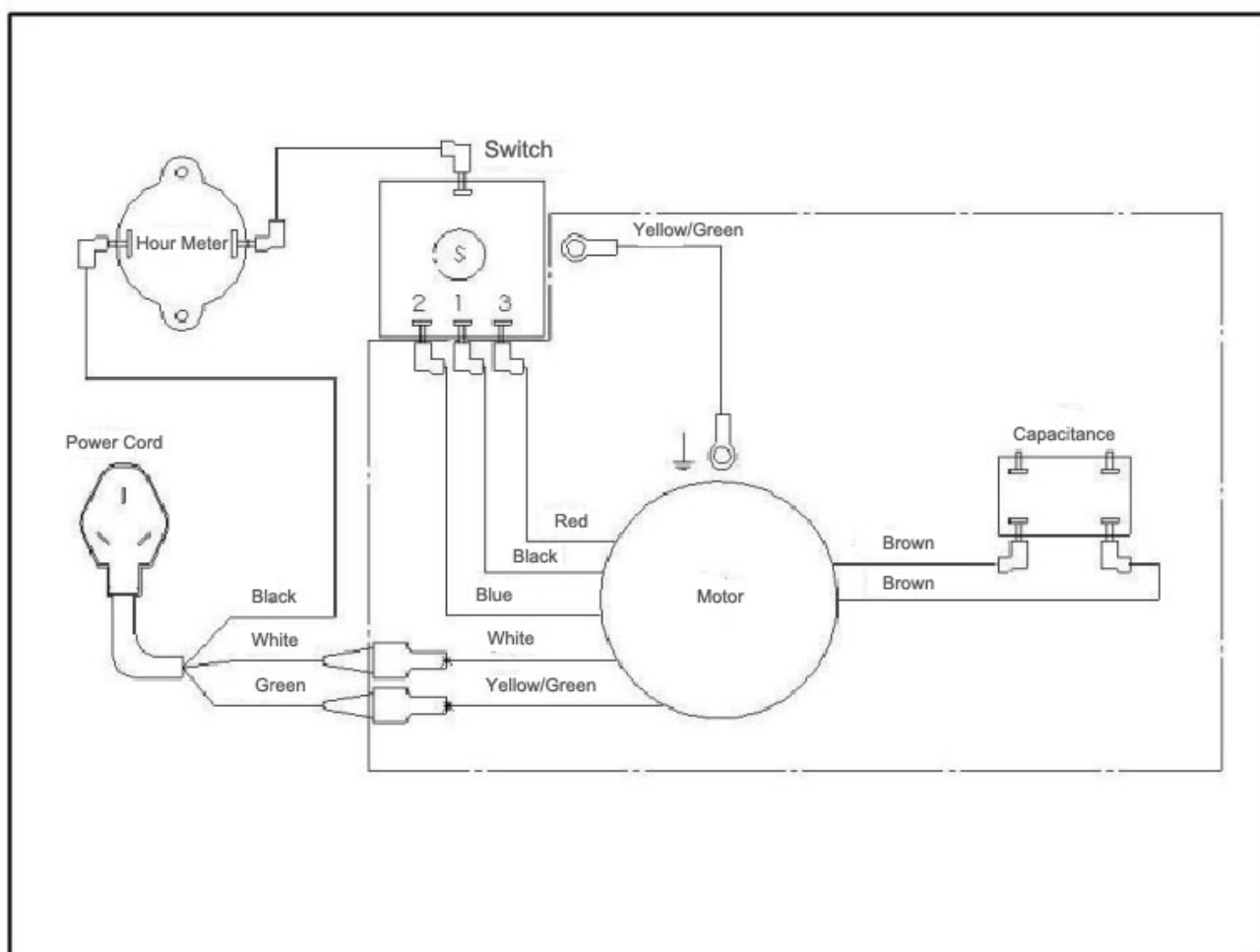
- Regularly check whether the insulation of power cord is broken or discolored. If yes, replace it please.。
- Check whether the fasteners get loose.
- Keep it clean. Use compressed air or a dust collector to clean dirt on the machine. Do not use a high-pressure cleaning machine.
- Note any abnormal sound during use. Stop the machine for checking in case of any abnormal noise.
- Balance inspection and calibration have been done for blower fans. Please take care of the fans during use. Never damage them.
- Only professionals allowed to disassemble the blow-dryer. The removal of the motor and fans may affect balance, resulting starting vibration and noise increase.

8.0 Parts List



SN	Part Number	Description
1	3CGA-0008	Motor / 1/4HP YDK139/200-4
2	3CGG-0006	Motor fixing bracket
3	3CGE-0012	Front Grille / Φ470
4	3CGE-0013	Rear Grille / Φ470
5	2SJ25B01-0003	Motor Grille
6	2SJ25E01-0001	Foot
7	3XCH-0015	Three-way Switch / B00188
8	3CGK-0001	Overload Protector 12A/ ZE800-12
9	3CGZ-0007	Socket
10	3CGZ-0006	Hour Meter JY732-03
11	2SJ25Q01-0001	Fan
12	2SJ25A01-0005	Fan Assy
13	3CGD-0002	Hub 1
14	3CGD-0003	Hub 2
15	3CGZ-0005	Draw Bar

9.0 Wiring Diagram



Suzhou Premier Electrical Appliance Co.,Ltd

9# Yangqing Road, Suzhou,215001, P.R.China

Service Line: 86-512-67255986

Fax: 86-512-67259661

Website: www.premie.com.cn